

GENERAL NOTES:

- (1) ACE, indicates Access Easement.
(2) RL, indicates Building Line.
(3) DL, indicates Driveway Easement.
(4) F.L., indicates Fence Line.
(5) M.C.C.F. indicates Harris County Clerk's File.
(6) H.C.D.R. indicates Harris County Clerk's File.
(7) H.C.P.R. indicates Harris County Clerk's File.
(8) H.C.A.P. indicates Harris County Clerk's File.
(9) H.C.L.P. indicates Harris County Clerk's File.
(10) H.C.S.P. indicates Harris County Clerk's File.
(11) H.C.U.P. indicates Harris County Clerk's File.
(12) H.C.V.P. indicates Harris County Clerk's File.
(13) H.C.W.P. indicates Harris County Clerk's File.
(14) H.C.X.P. indicates Harris County Clerk's File.
(15) H.C.Y.P. indicates Harris County Clerk's File.
(16) H.C.Z.P. indicates Harris County Clerk's File.
(17) H.C.A.P. indicates Harris County Clerk's File.
(18) H.C.B.P. indicates Harris County Clerk's File.
(19) H.C.C.P. indicates Harris County Clerk's File.
(20) H.C.D.P. indicates Harris County Clerk's File.
(21) H.C.E.P. indicates Harris County Clerk's File.
(22) H.C.F.P. indicates Harris County Clerk's File.
(23) H.C.G.P. indicates Harris County Clerk's File.
(24) H.C.H.P. indicates Harris County Clerk's File.
(25) H.C.I.P. indicates Harris County Clerk's File.
(26) H.C.J.P. indicates Harris County Clerk's File.
(27) H.C.K.P. indicates Harris County Clerk's File.
(28) H.C.L.P. indicates Harris County Clerk's File.
(29) H.C.M.P. indicates Harris County Clerk's File.
(30) H.C.N.P. indicates Harris County Clerk's File.
(31) H.C.O.P. indicates Harris County Clerk's File.
(32) H.C.P.P. indicates Harris County Clerk's File.
(33) H.C.Q.P. indicates Harris County Clerk's File.
(34) H.C.R.P. indicates Harris County Clerk's File.
(35) H.C.S.P. indicates Harris County Clerk's File.
(36) H.C.T.P. indicates Harris County Clerk's File.
(37) H.C.U.P. indicates Harris County Clerk's File.
(38) H.C.V.P. indicates Harris County Clerk's File.
(39) H.C.W.P. indicates Harris County Clerk's File.
(40) H.C.X.P. indicates Harris County Clerk's File.
(41) H.C.Y.P. indicates Harris County Clerk's File.
(42) H.C.Z.P. indicates Harris County Clerk's File.

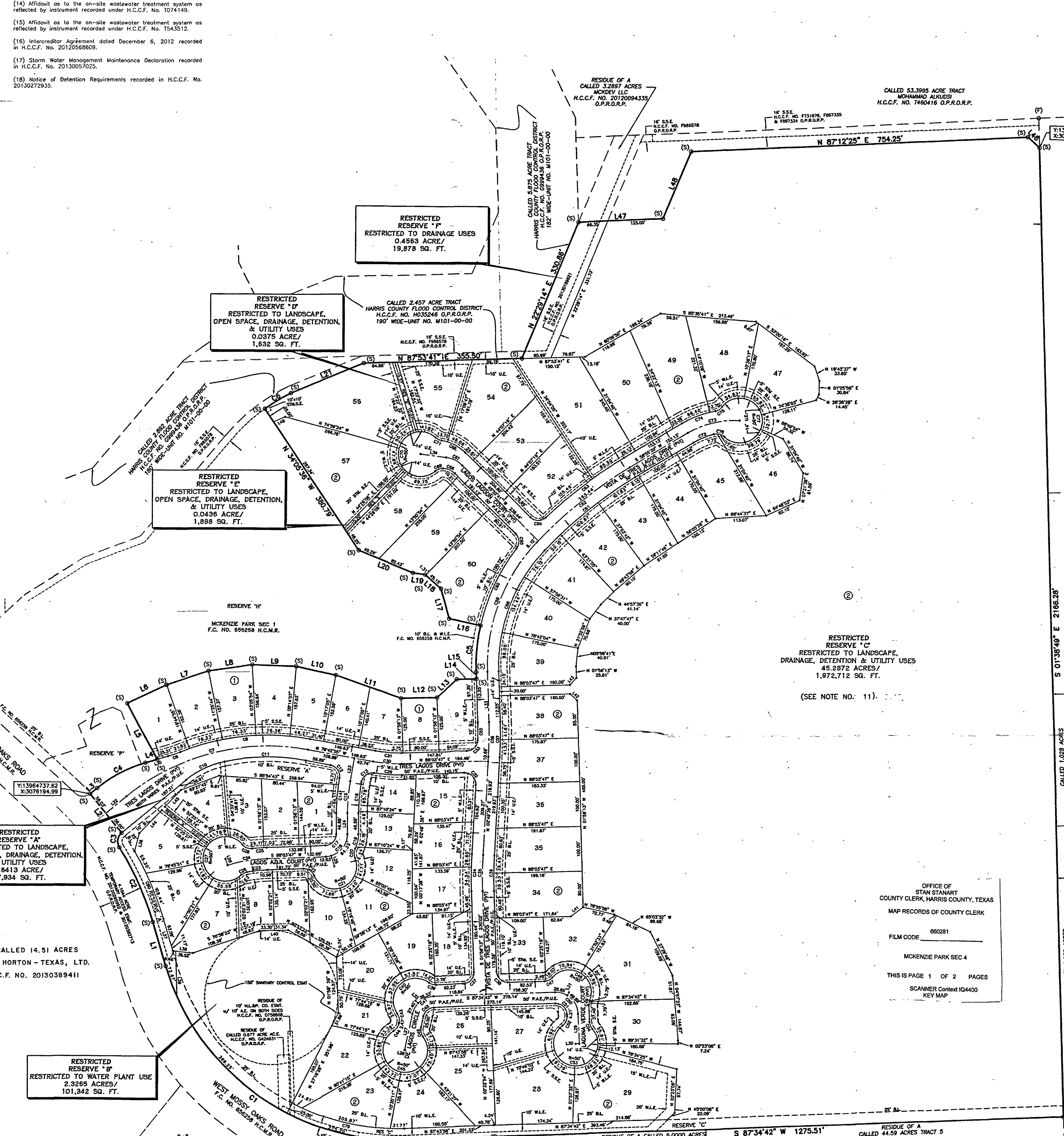


Table with columns: CURVE, RADIUS, DELTA ANGLE, ARC LENGTH, CHORD BEARING, CHORD LENGTH. Lists curve data for the subdivision.

Table with columns: CURVE, RADIUS, DELTA ANGLE, ARC LENGTH, CHORD BEARING, CHORD LENGTH. Lists curve data for the subdivision.

STATE OF TEXAS, COUNTY OF HARRIS, TREES LAGO DEVELOPMENT, L.L.C., a Texas limited liability company...

IN TESTIMONY WHEREOF, the Tres Lago Development, L.L.C., a Texas limited liability company, has caused these presents to be signed by Perry Senn, its Manager...

IN TESTIMONY WHEREOF, the MCKDEV, L.L.C. has caused these presents to be signed by Perry Senn, its Manager...

STATE OF TEXAS, COUNTY OF HARRIS, BEFORE ME, the undersigned authority, on this day personally appeared Perry Senn, Manager of MCKDEV, L.L.C...

IN TESTIMONY WHEREOF, the MCKDEV, L.L.C. has caused these presents to be signed by Perry Senn, its Manager...

STATE OF TEXAS, COUNTY OF HARRIS, BEFORE ME, the undersigned authority, on this day personally appeared Perry Senn, Manager of MCKDEV, L.L.C...

Witness my hand and seal of office, at Houston, the day and date last above written.

L. Stan Stator, County Clerk of Harris County, do hereby certify that the within instrument was duly recorded in my office on 11/20/14 at 1:55:30 p.m. in Book 106 of the Map Records of Harris County for said County.

Witness my hand and seal of office, at Houston, the day and date last above written.

L. Charles Kennedy, Jr., an authorized (or registered) under the laws of the State of Texas to practice the profession of surveying and hereby certify that the above subdivision is a correct and true representation of the actual survey of the property shown under the supervision of the ground, that all boundary corners, angle points, points of tangency and other points of reference have been marked with the (let) after the (permanent mark) depth of not less than three (3) feet and that the plot boundary corners have been tied to the nearest survey corner on the state plane coordinates (NAD83).

MCKENZIE PARK SEC 4 A FLAIR DEVELOPMENT

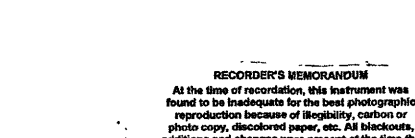
BEING A SUBDIVISION OF 82.45 ACRES OUT OF THE JAMES COOPER SURVEY, A-189 IN HARRIS COUNTY, TEXAS, ALSO BEING A PARTIAL REPLAT OF FOX HOLLOW SEC ONE EXTENSION, RECORDED AT FILM CODE NO. 392053 H.C.M.R.

REASON FOR REPLAT: TO CREATE 69 LOTS AND 6 RESERVES

69 LOTS 2 BLOCKS 6 RESERVES

OWNER: TREES LAGO DEVELOPMENT, L.L.C. A TEXAS LIMITED LIABILITY COMPANY. MCKDEV, L.L.C. A TEXAS LIMITED LIABILITY COMPANY.

NOVEMBER, 2013



10555 Westoffice Drive, Houston, Texas 77042. 713.784.4500. EHRinc.com. TYPE No. F-726.