

**DEVELOPER APPROVAL**

By signing below, I acknowledge that I am the developer, or an authorized representative of the developer, of this project and that I have read and understand all statements, notes, detail drawings, and all attendant contracts and agreements (collectively the "materials") furnished to the developer regarding construction of the electrical facilities as indicated on this layout/plat. I understand that if I have not seen and read the materials, I may request a copy of them before I sign below. Further, I understand that by signing below, I agree to all facility locations as depicted on this layout/plat, and that future relocations of any facilities after installation will be performed solely at the cost of the developer/requestor. The developer must furnish copies of this layout/plat to all builders working on this project; builders must furnish copies to all electricians working within the boundaries of this layout/plat. Electricians must wire service connections as shown on this layout/plat unless otherwise approved by an authorized CenterPoint Energy representative.

Signature \_\_\_\_\_ Title \_\_\_\_\_  
 Printed Name \_\_\_\_\_ Date \_\_\_\_\_

**Easement Requirements**

**LIGHTING DESIGN SERVICES - LIGHTING LEGEND**

**IMPORTANT NOTE: READ SPECIAL INSTRUCTIONS BELOW AND REFERENCE ANY SPECIAL NEEDS THAT MAY BE SHOWN ON SKETCH.**

**NEW STREET LIGHT INSTALLATION SYMBOLS**

SYMBOLS	QUANTITY	SINGLE LAMP WATTAGE AND TYPE (Circle One Lamp Type for Each Wattage)			
		100W	150W	175W	250W
●	OH - UG - 21	100W	HPS	MH	MV
⊙	OH - UG -	150W	HPS	MH	MV
⊗	OH - UG -	175W	HPS	MH	MV
⊘	OH - UG -	250W	HPS	MH	MV
⊙	OH - UG -	400W	HPS	MH	MV

SYMBOLS	QUANTITY	DUAL UG ONLY LAMP WATTAGE AND TYPE (Circle One Lamp Type for Each Wattage)			
		100W	150W	175W	250W
●		100W	HPS	MH	MV
⊙		150W	HPS	MH	MV
⊗		175W	HPS	MH	MV
⊘		250W	HPS	MH	MV
⊙		400W	HPS	MH	MV

**ADDITIONAL INSTALLATION MATERIAL SYMBOLS**

TP	TERMINAL POLE	R	RELAY
X	PROPOSED WOOD POLE	◇	PULLBOX
○	12KV 35KV PROPOSED OVERHEAD TRANSFORMER		

	2,200	UNDERGROUND CONDUCTOR (Check One) Direct Embedded Wire <input checked="" type="checkbox"/> Conduit and Wire <input type="checkbox"/>
----		OVERHEAD CONDUCTOR #4 2/C TWIST (UNLESS OTHERWISE NOTED)

**EXISTING STREET LIGHT SYMBOLS AND WATTAGES**

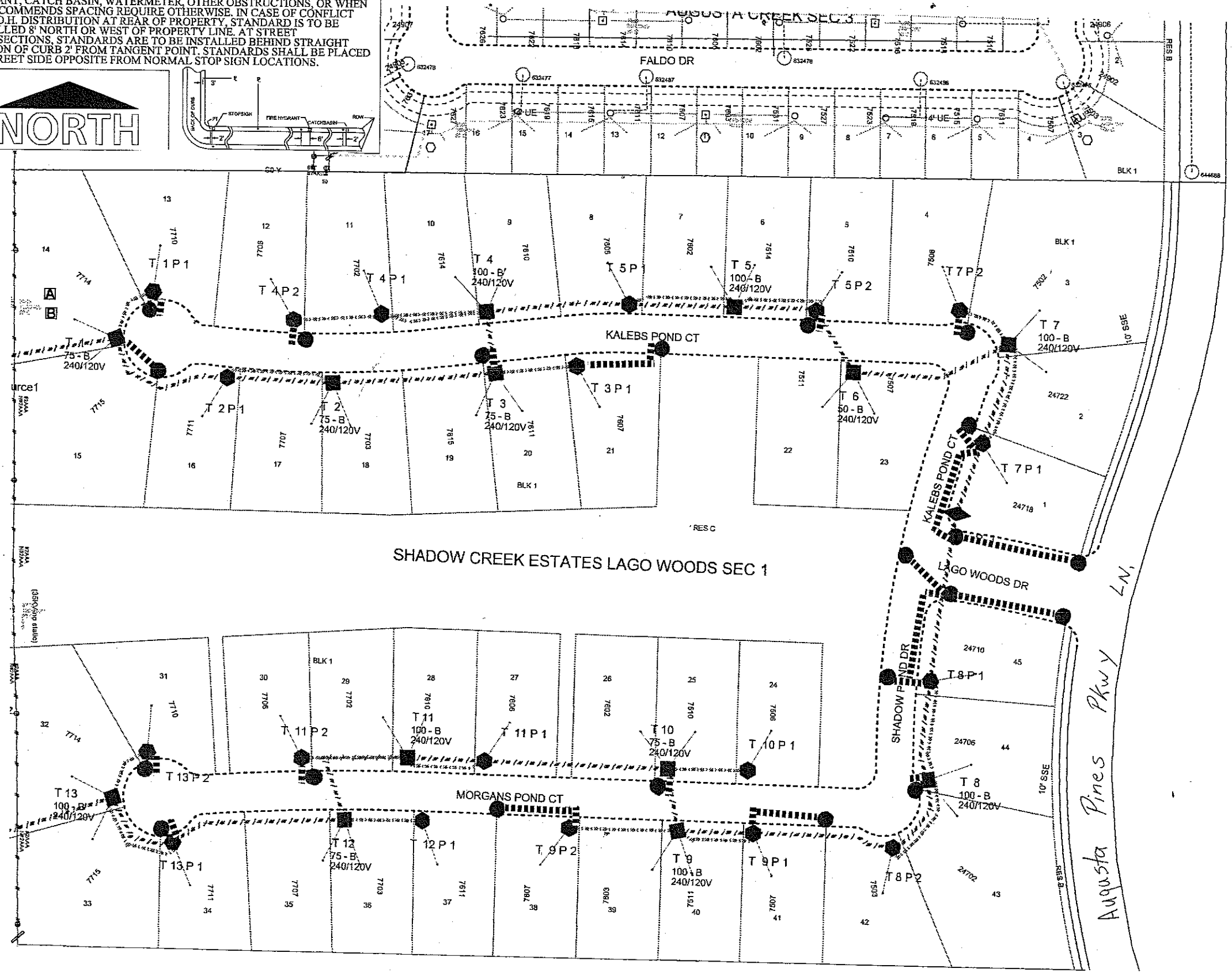
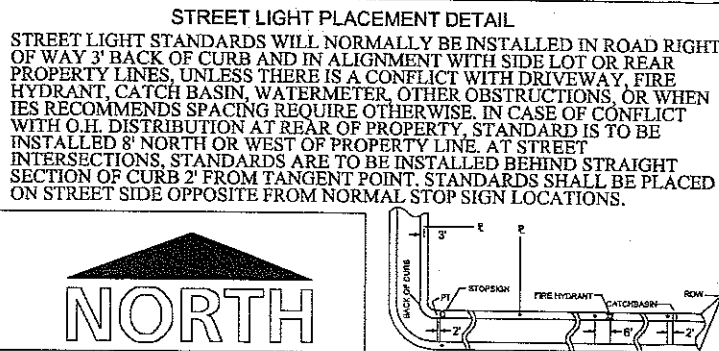
■	250 MH	△	70	○	100	⊙	150	⊗	175	⊘	250	⊙	400
INSTALLATION VOLTAGE: (Circle One Only) (20) 240 480													

**SHADOW CREEK ESTATES**  
 Midtown on a 17 Tract.  
 Pole

WO BY: E. RODRIGUEZ	W.O.#: 62022201
PHONE: 713-945-3219	KEY MAP #: 250X
CELL: CELL	LAMBERT #: 4972-B3
DATE: DATE	SERVICE CENTER: GPT
TYPE: HLC1-501	SCALE - 1" = SCALE

**Street Light Notes**

- All streets must be curbed and guttered prior to the installation of street lighting facilities unless otherwise approved by the Lighting Design Service Department.
- Dedicated street light easements are required along all placement of street lighting facilities when such facilities are installed along private streets. Street lighting will only be installed along private streets that can be accessed for maintenance and only when such a street is constructed in an easement intended to contain a private street, waterlines, sanitary sewer lines, storm sewer, and such other utility or franchise infrastructures as can be accommodated and which, for the purpose of established setback, will be considered to be the equal of a public street.
- The design of all streets, utility easements, and storm sewer easements must be approved by all appropriate reviewing agencies before the installation of street lighting.
- Street lighting will be installed to the recommendations of the Illuminating Engineering Society unless otherwise requested and agreed upon in writing by the requestor of street lighting service.



NON-IES LAYOUT  
 Revision #2 - 1-08-2013